



**State Road (SR) 15/US 441  
Improvements Project  
from South of Shirley Drive to East Main Street**

Palm Beach County, FL

Financial Project ID: 443994-1-52-01

Virtual Public Meeting  
Wednesday, July 20, 2022



# Virtual Public Meeting Orientation

## Moderator & Presenter



**Melissa Readling**  
Community Outreach Specialist  
The Corradino Group

## Meeting Format

### Presentation, Q&A Session

- 5 p.m. to 5:30 p.m.
- 5:30 p.m. to 6 p.m.

### Unguided PowerPoint Slide Show

- If time allows

The Florida Department of Transportation is required to comply with various non-discrimination laws and regulations, including **Title VI of the Civil Rights Act of 1964.**

*Public participation is solicited without regard to race, color, national origin, age, sex, religion, disability, or family status.*

**Persons wishing to express concerns about Title VI may do so by contacting either:**

**District Four**

Florida Department of Transportation  
*District Four Title VI Coordinator*

**Sharon Singh Hagyan**



(954) 777-4190,



[Sharon.SinghHagyan@dot.state.fl.us](mailto:Sharon.SinghHagyan@dot.state.fl.us)

**Tallahassee Office**

Florida Department of Transportation  
State Title VI Coordinator

**Jacqueline Paramore**



(850) 414-4753,



[jacqueline.paramore@dot.state.fl.us](mailto:jacqueline.paramore@dot.state.fl.us)

*All inquiries or concerns will be handled according to FDOT procedure and in a prompt and courteous manner.*

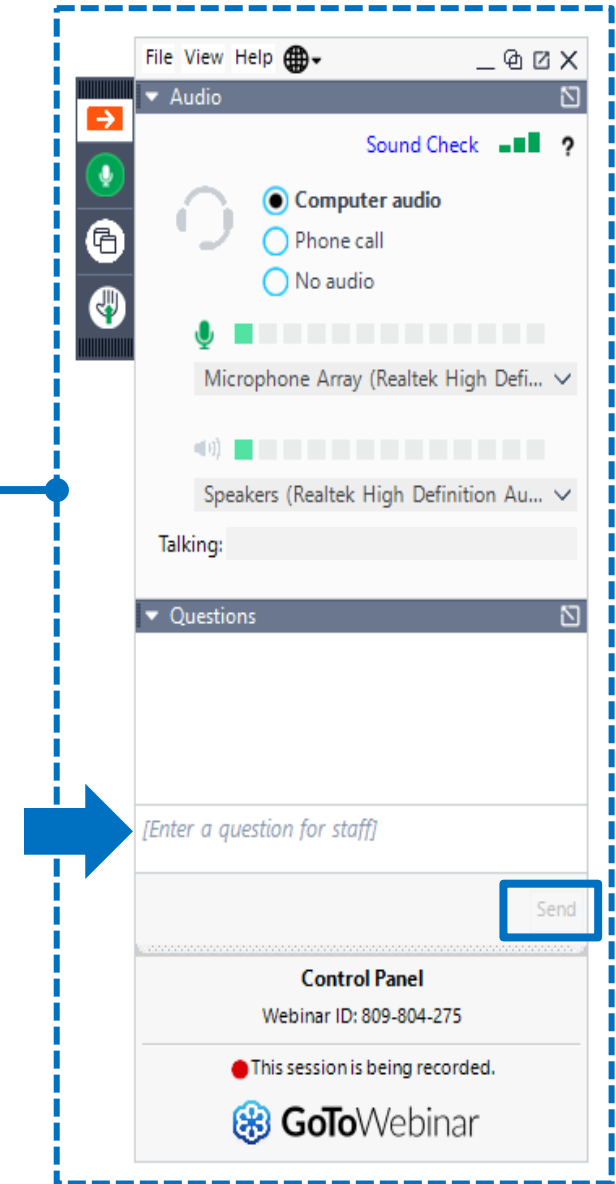
# Virtual Public Meeting Orientation



- This Virtual Public Meeting is being recorded.
- All attendees **will remain muted** throughout the meeting.
- If you experience technical difficulties, please contact **GoToWebinar Support at +1(833) 851-8340.**
- At the end of the presentation attendees are also welcome to submit any questions/comments using the GoToWebinar Question Panel and a member of the team will respond during the question-and-answer portion. To request to speak, click the Raise Hand button on the Control Panel and unmute your microphone when your name is called.

# Participating on GoToWebinar

- If you would like to ask a question verbally, please click on the hand icon to be recognized.
- This meeting is being recorded and will be posted to [www.d4fdot.com](http://www.d4fdot.com).





# Meet the Team



**Jessica Lewis**  
Construction Project Manager  
FDOT District Four  
Palm Beach Operations



**Josh Torrens**  
Contractor  
Ranger Construction



**Hernando Garces, P.E.**  
Construction Project Administrator  
Creative Engineering Group



**Damaris Williams, P.E.**  
Design Project Manager  
FDOT District Four, Design

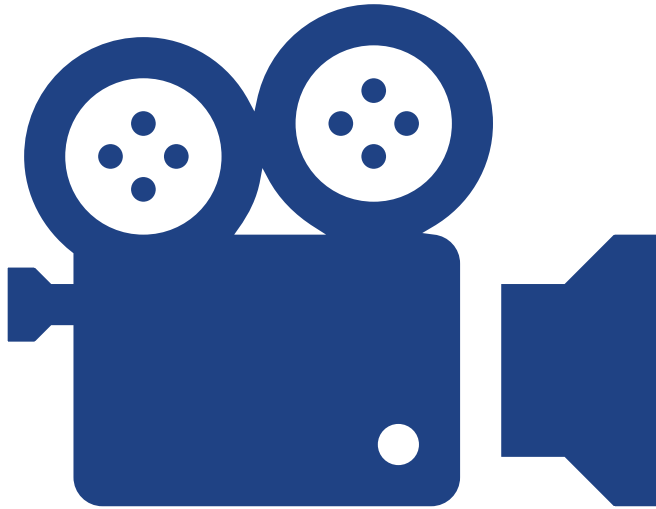


**Kevin Micocci, P.E.**  
Senior Project Engineer  
Creative Engineering Group



**Cyndy Kendrick, P.E.**  
Engineer of Record  
Stanley Consultants, Inc.

# Project Presentation



- Please enjoy the following slides which include information on the improvements to be completed, along with road and lane closure information.
- We will start the Question & Answer session after the presentation.

# Project Limits





# Project Overview

**Purpose:** Mill and resurface SR 15 in both directions, upgrade pedestrian lighting with LED luminaires along SE Barack Obama Boulevard at SR 15, install new sidewalk, crosswalks, and curb ramps to meet Americans with Disabilities Act (ADA) standards, install signage and pavement markings, and replace existing guardrail

**Length:** 1.975 miles

**Contractor:** Ranger Construction Industries, Inc.

**Construction Start:** July 29, 2022

**Estimated Contract Cost:** \$4.5 Million

**Contract Time:** 227 calendar days  
(not including weather and holidays)

**Estimated Completion:** Summer 2023



SE Barack Obama Boulevard  
existing light structures  
(pre-construction)

# Scope of Work – Roadway & Pedestrian Improvements

## Roadway Improvements

- Mill and resurface the existing roadway
- Replace existing guardrail
- Install signage and pavement markings

## Pedestrian Improvements

- Upgrade pedestrian lighting with LED luminaires along SE Barack Obama Boulevard Intersection
- Install new sidewalks, crosswalks, and curb ramps to meet Americans with Disabilities Act (ADA) standards



Southbound SR 15/US 441 just north of  
Shirley Drive  
(pre-construction)

## Maintenance of Traffic

- Construction will occur in phases to minimize impacts to the public
- During lane closures, flaggers will be provided to direct traffic through the work zone
- During harvest off-season, May 1 through September 30, one lane and shoulder may be closed, around the clock, Sunday through Saturday
- During harvest season, October 1 through April 30, lane closures south of SR 729/State Market Road, will only be permitted nightly, 8 p.m. until 5 a.m., Sunday through Saturday
- Pedestrian routes and driveway access will be maintained at all times.



# Construction Phases

## Phase 1

- Reconstruct portions of the existing roadway along SR 15 between Padgett Circle and S Barfield Highway

## Phase 2

- Construct sidewalk and guardrail along southbound SR 15

## Phase 3

- Install new guardrail, connections to existing sidewalks on side streets, and lighting

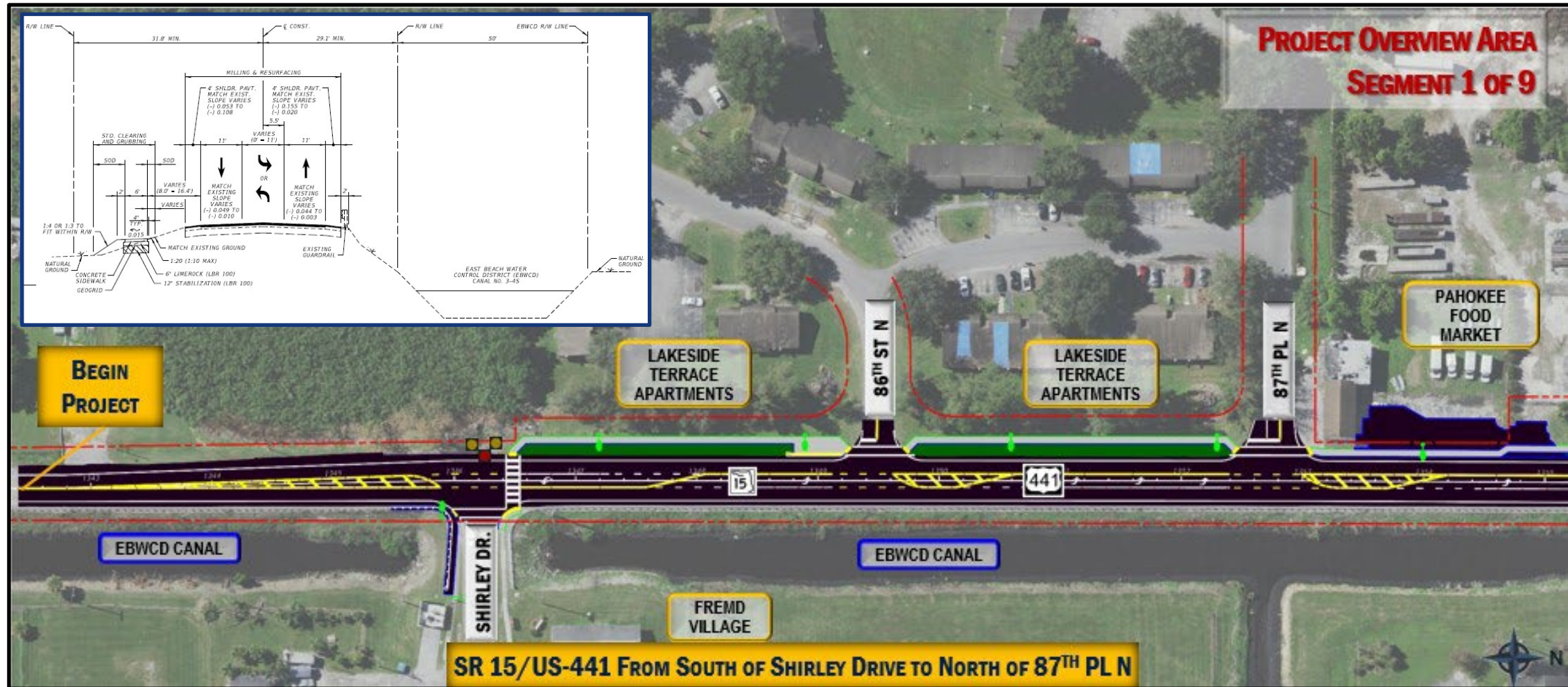
## Phase 4

- Mill and resurface the existing roadway, install signage and pavement markings



Northbound SR 15/US 441 and S Barfield Highway  
(pre-construction)

# Project Overview – Segment 1 of 9

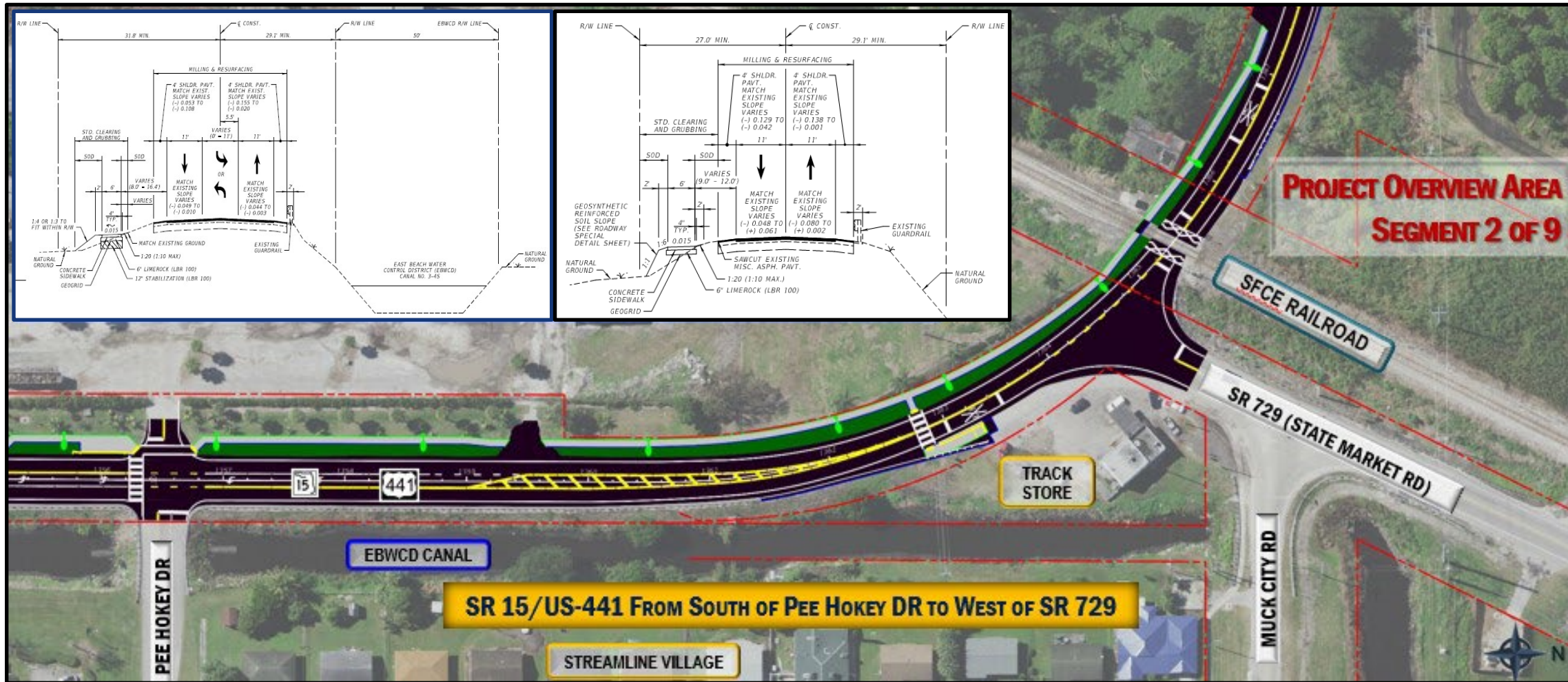


## Legend

- |   |   |   |   |
|---|---|---|---|
|  | New Pavement                                    |  | Blue lines are construction limits                            |
|  | New Concrete Sidewalk                           |  | Red lines are the Right of Way limits                         |
|  | Green areas are embankment slopes to be sodded. |  | Black box with blue line is paving and harmonization location |
|   |   |  | Pavement marking  |



# Project Overview – Segment 2 of 9



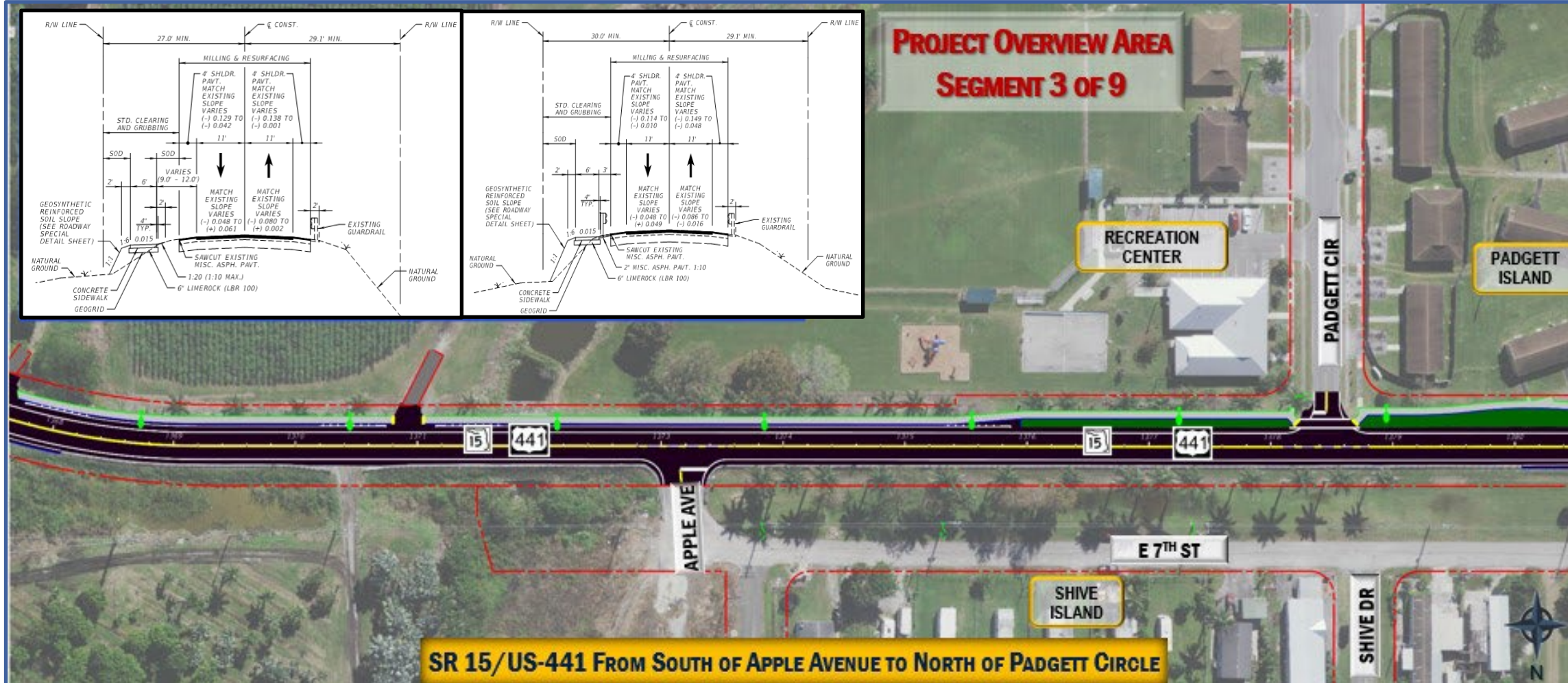
## Legend

- New Pavement
- New Concrete Sidewalk
- Green areas are embankment slopes to be sodded.

- Blue lines are the limits of construction
- Red lines are the ROW limits.
- Pavement marking



# Project Overview – Segment 3 of 9



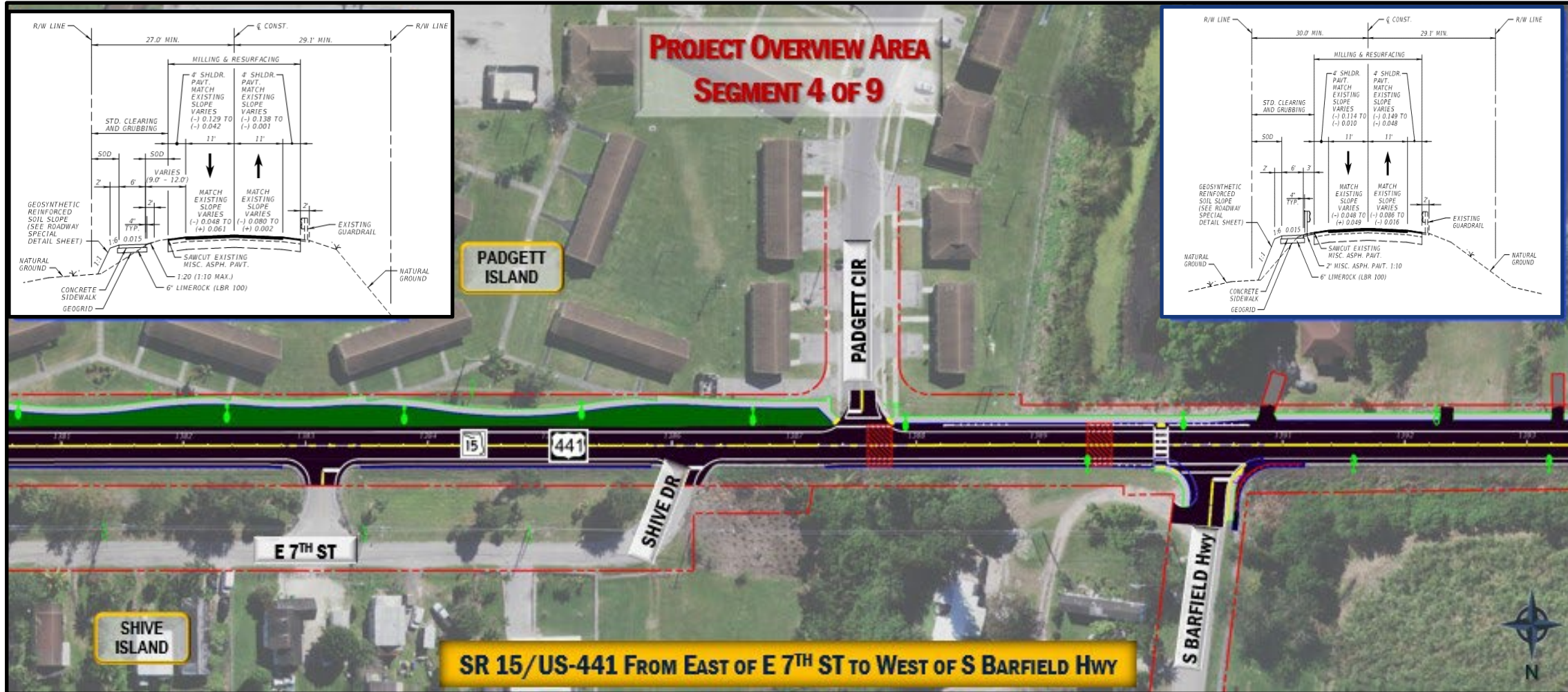
## Legend

- New Pavement
- New Concrete Sidewalk
- Green areas are embankment slopes to be sodded.

- Blue lines are the limits of construction
- Red lines are the ROW limits.
- Pavement marking

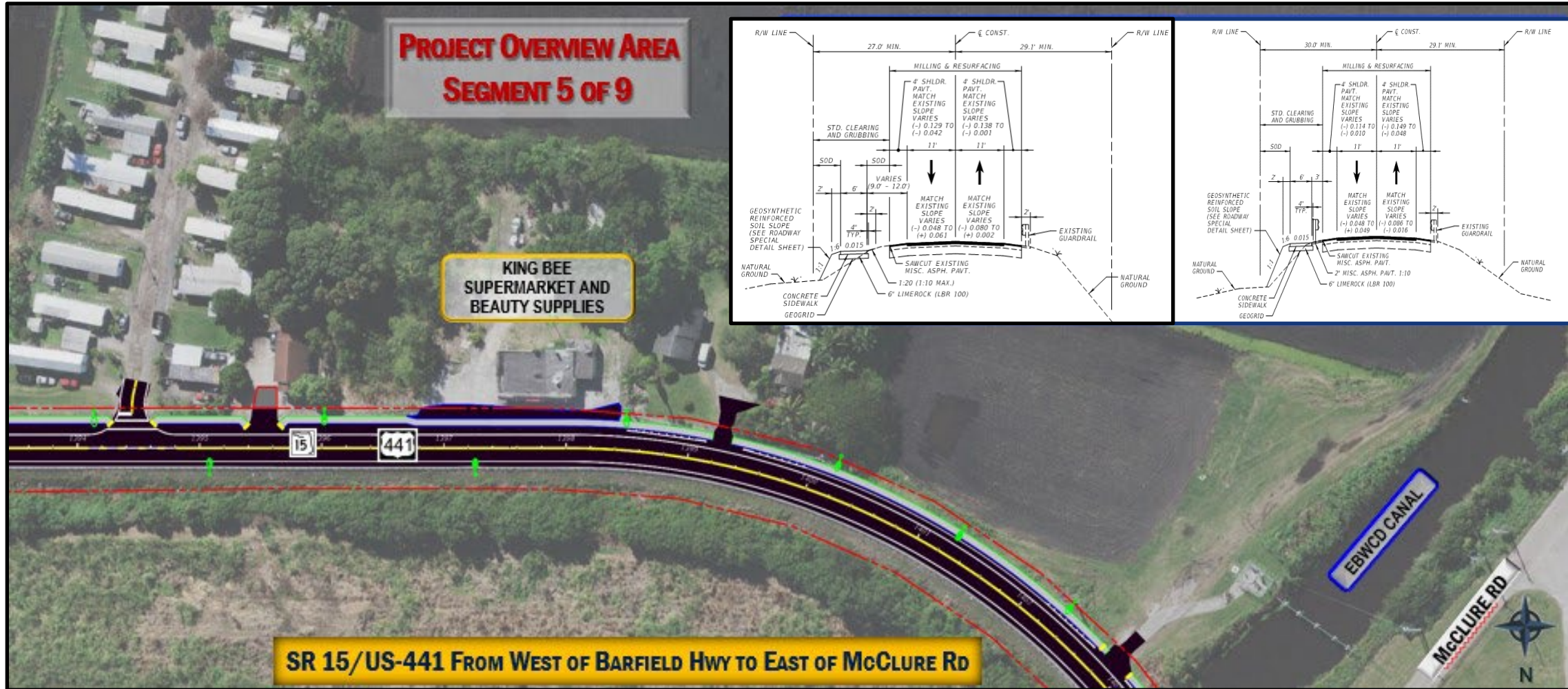


# Project Overview – Segment 4 of 9





# Project Overview – Segment 5 of 9



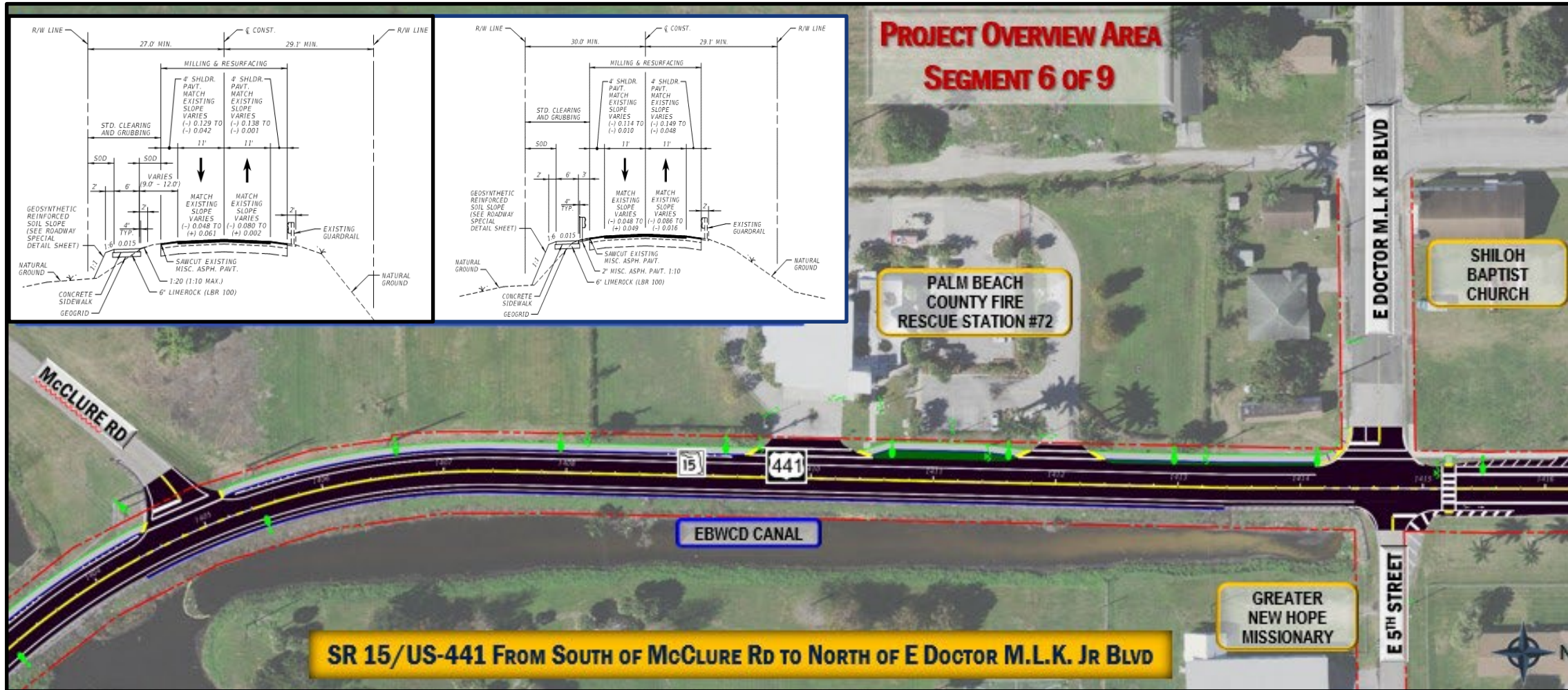
## Legend

- New Pavement
- New Concrete Sidewalk
- Green areas are embankment slopes to be sodded.

- Blue lines are the limits of construction
- Red lines are the ROW limits.
- Pavement marking



# Project Overview – Segment 6 of 9



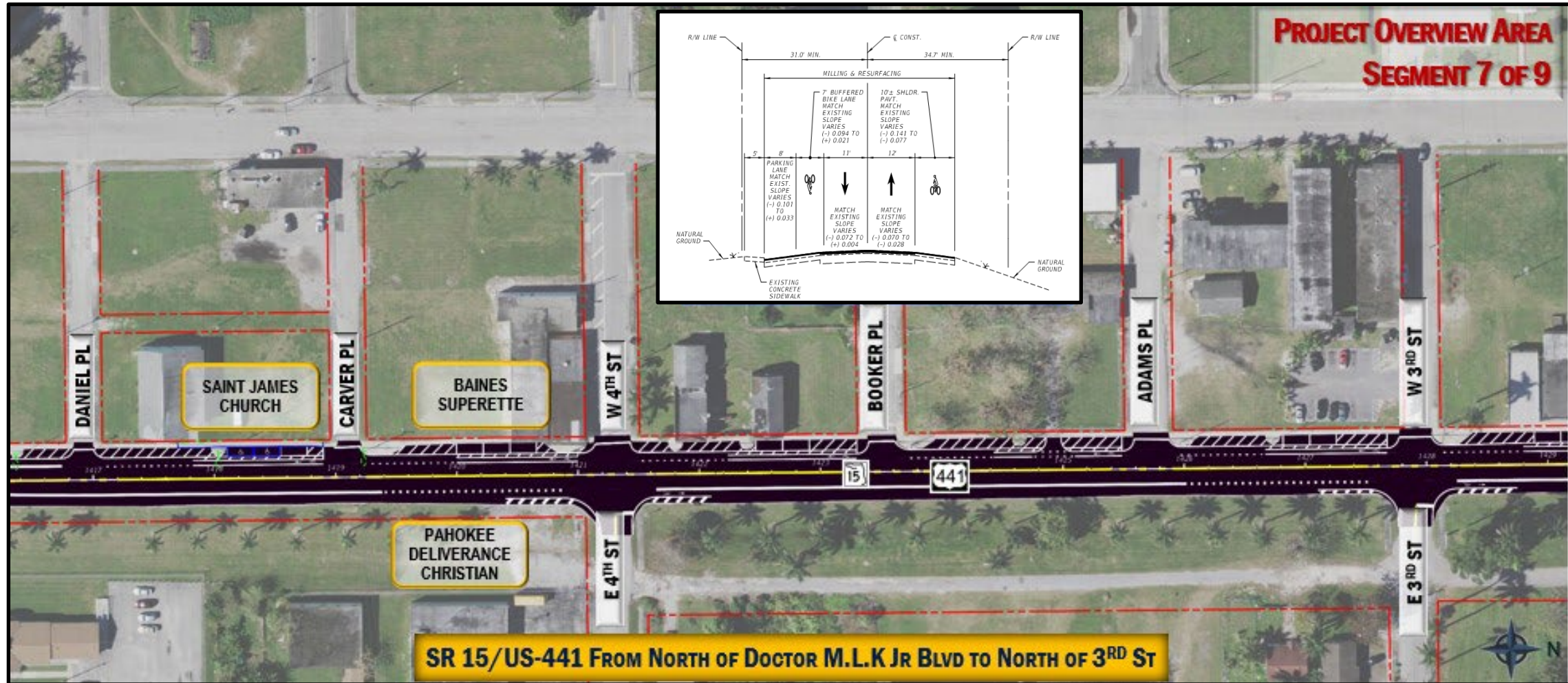
## Legend

- New Pavement
- New Concrete Sidewalk
- Green areas are embankment slopes to be sodded.

- Blue lines are the limits of construction
- Red lines are the ROW limits.
- Pavement marking



# Project Overview – Segment 7 of 9



## Legend



New Pavement

New Concrete Sidewalk

Green areas are embankment slopes to be sodded.



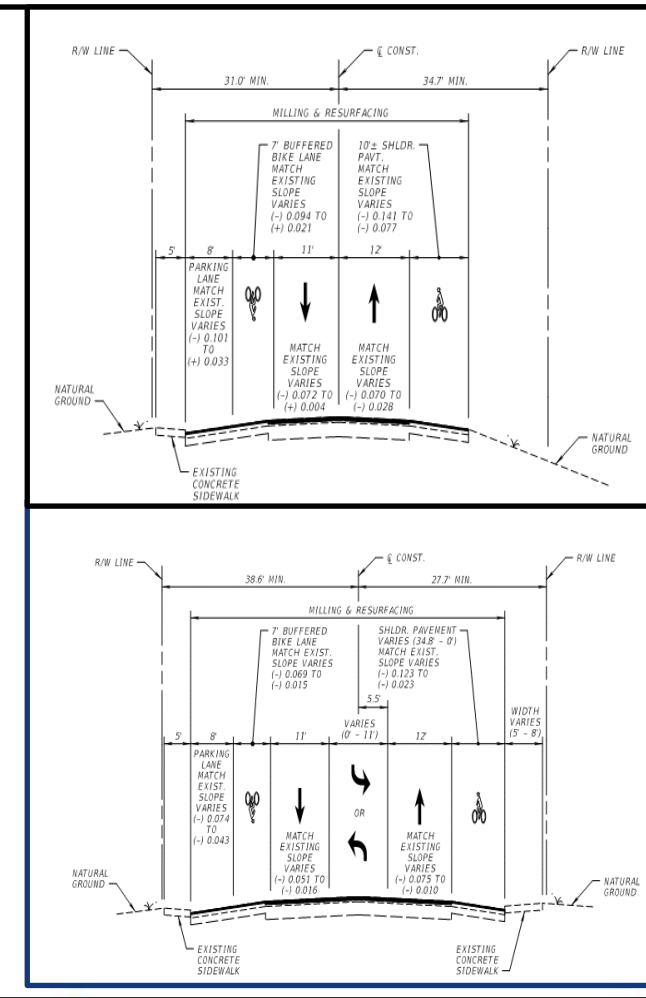
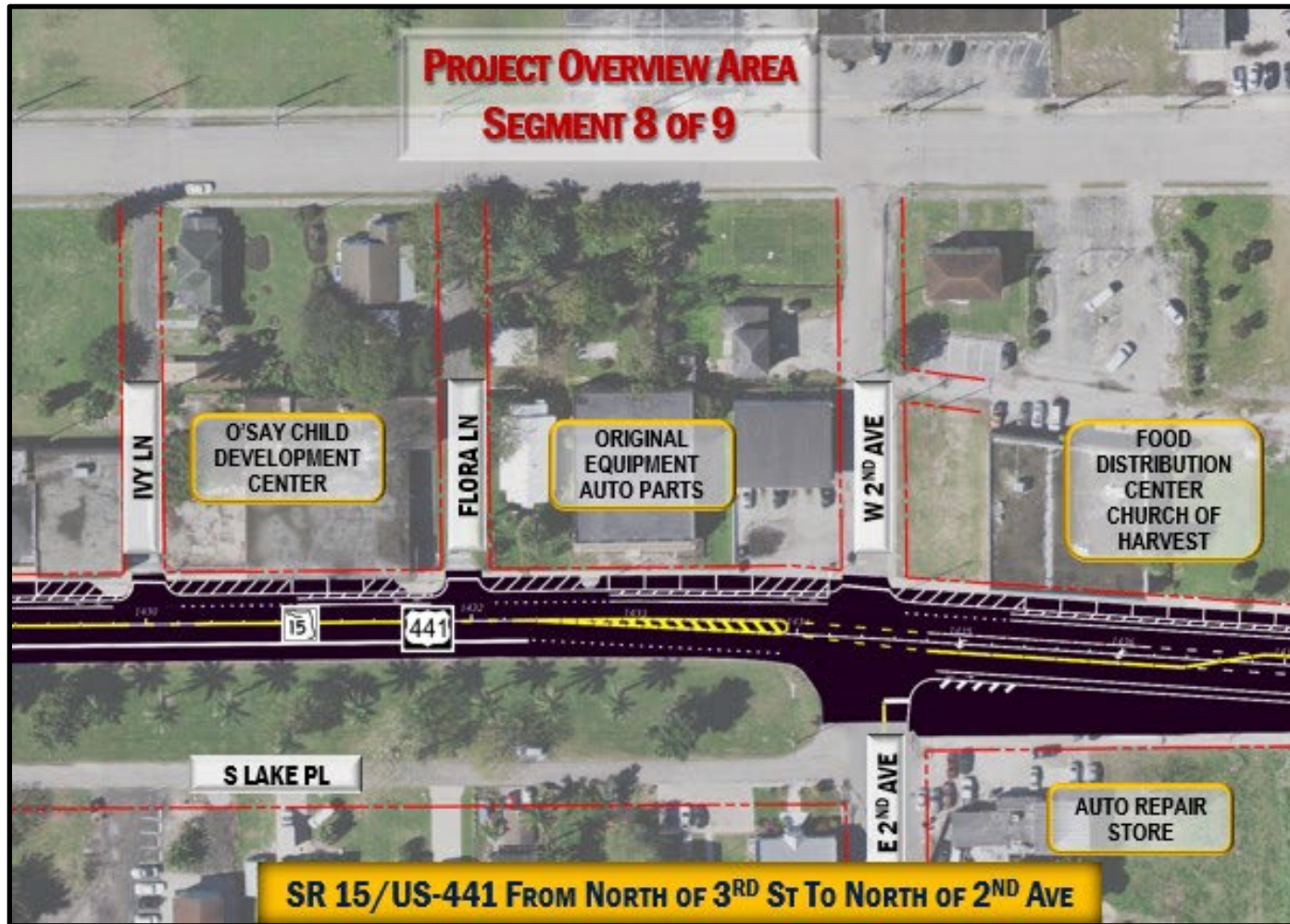
Blue lines are the limits of construction

Red lines are the ROW limits.

Pavement marking



# Project Overview – Segment 8 of 9



## Legend

- New Pavement
- New Concrete Sidewalk
- Green areas are embankment slopes to be sodded.

- Blue lines are the limits of construction
- Red lines are the ROW limits.
- Pavement marking



# Project Overview – Segment 9 of 9



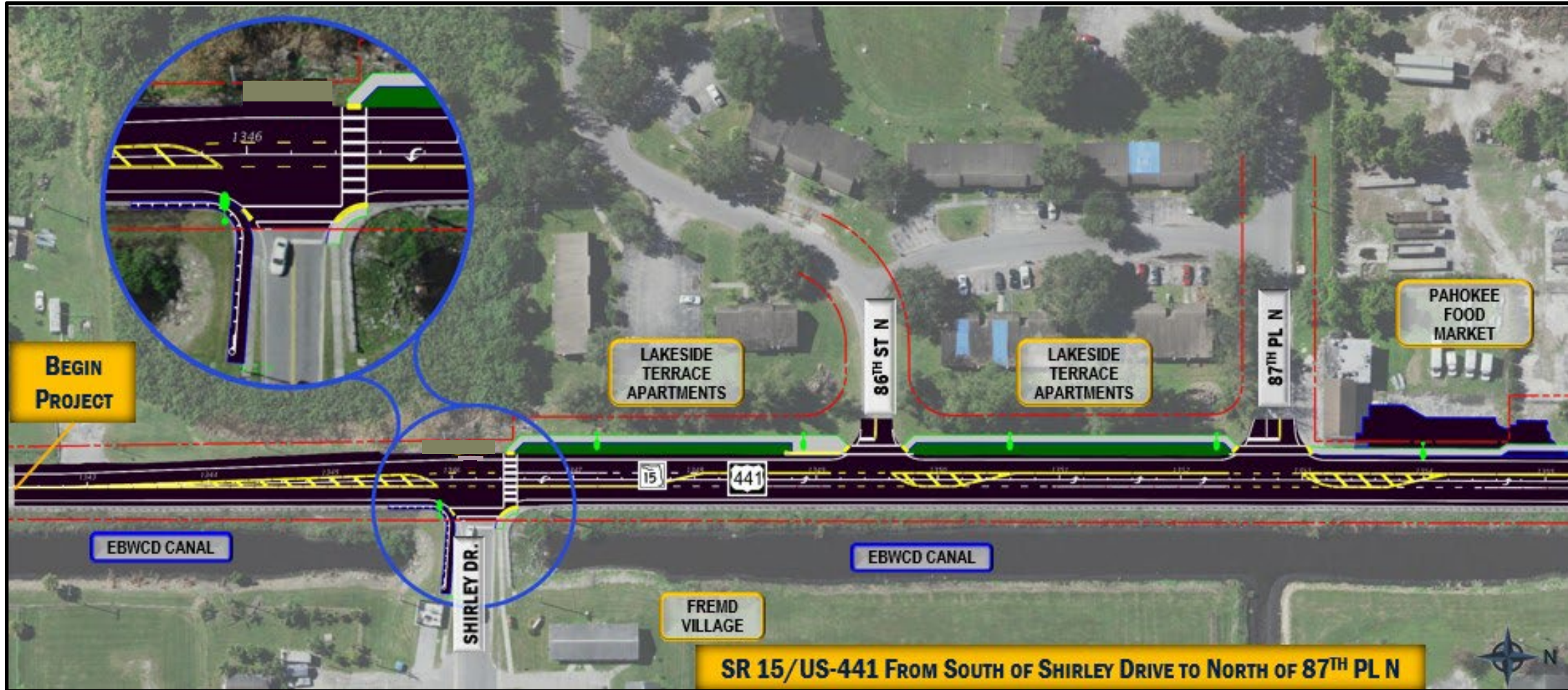
## Legend

- New Pavement
- New Concrete Sidewalk
- Green areas are embankment slopes to be sodded.

- Blue lines are the limits of construction
- Red lines are the ROW limits.
- Pavement marking



# Pedestrian Marking Improvements 1 of 7



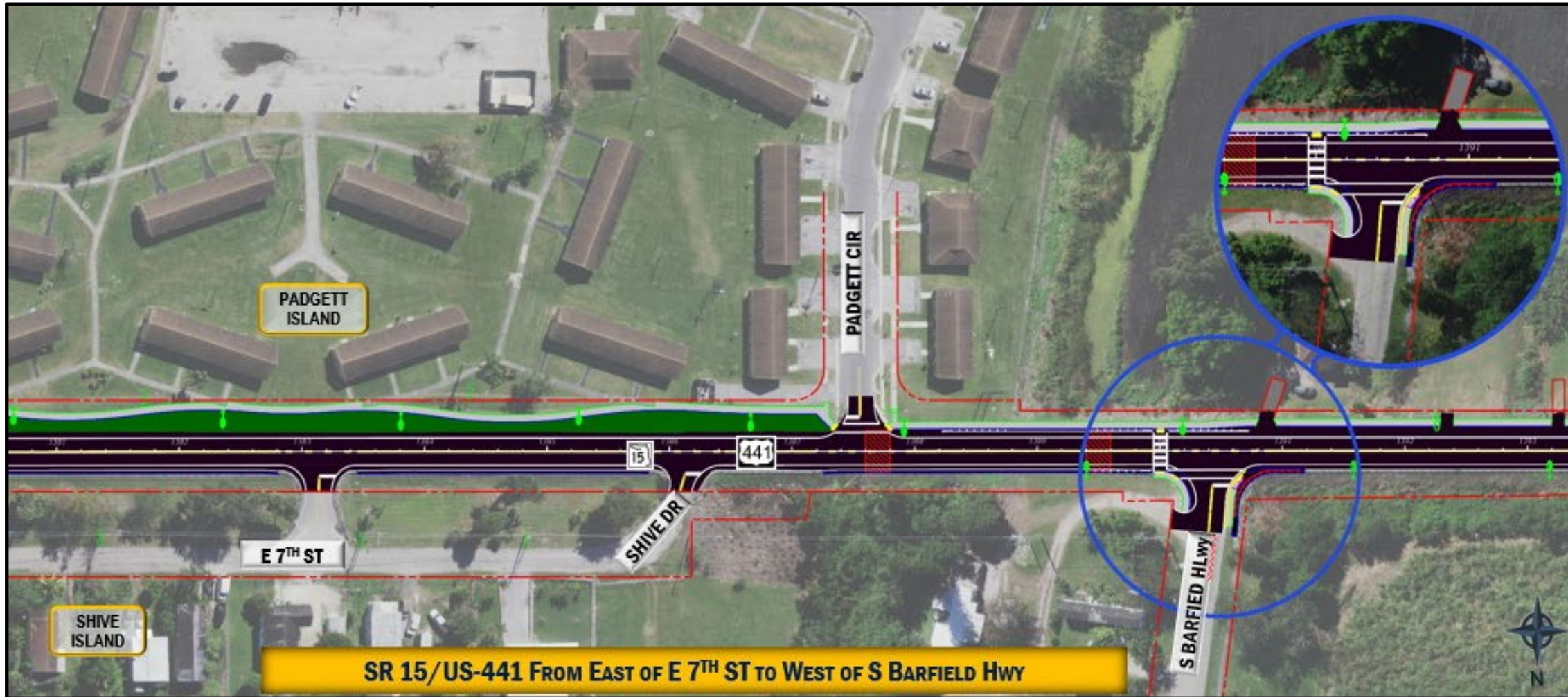


# Pedestrian Marking Improvements 3 & 4 of 7



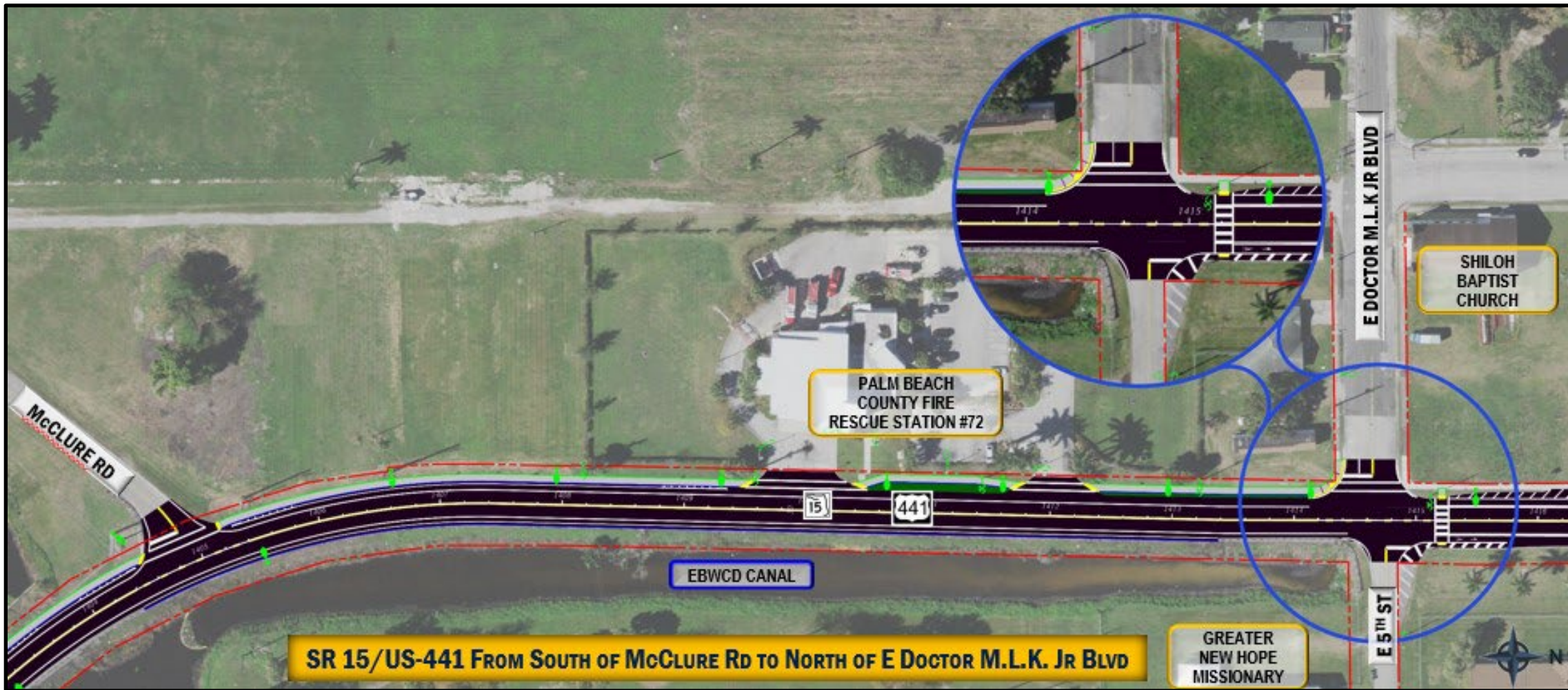


# Pedestrian Marking Improvements 5 of 7



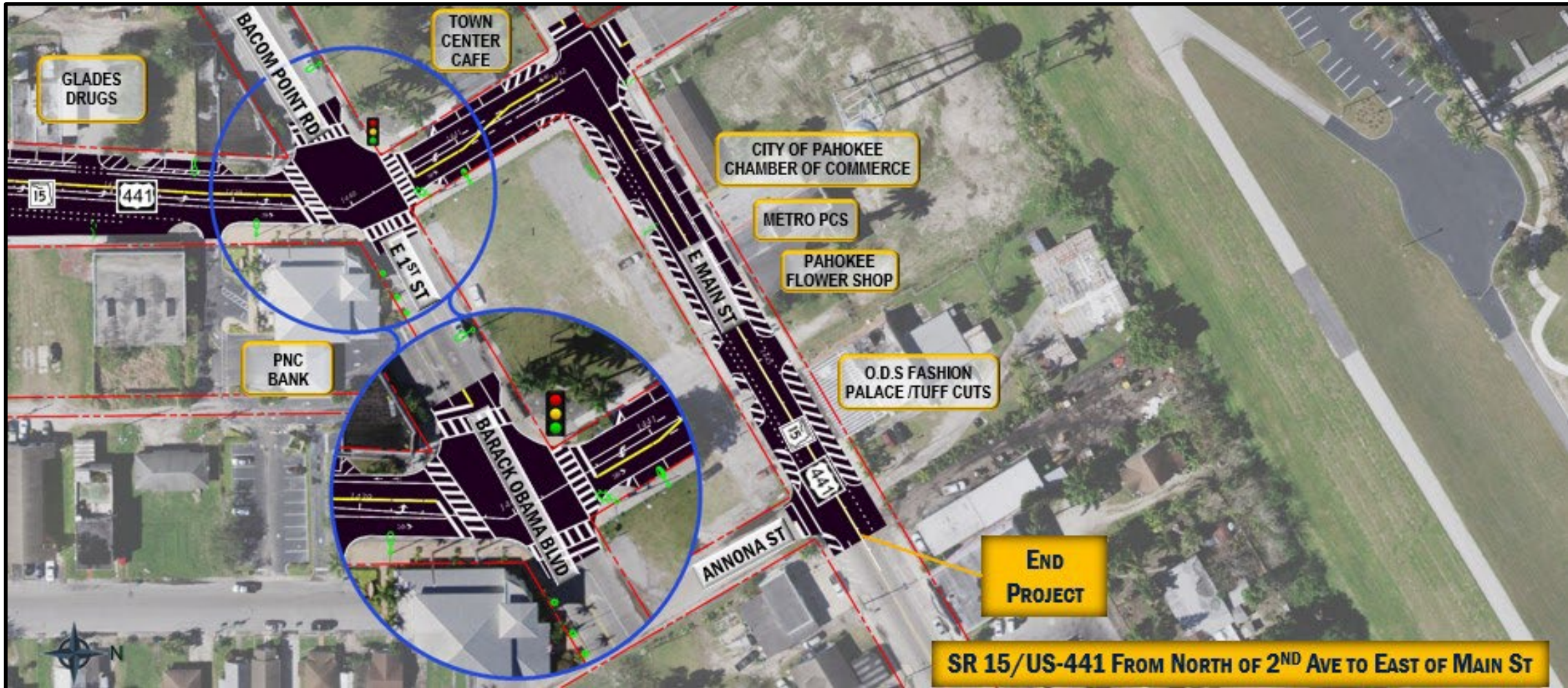


# Pedestrian Marking Improvements 6 of 7





# Pedestrian Marking Improvements 7 of 7



# Safety and Local Coordination

- **Public Safety is our Top Priority!**
  - **Work Zone Signage & Maintenance of Traffic**
    - Advanced warning and project signage will be placed throughout the construction corridor to alert the traveling public
  - **Local Agency & Stakeholder Coordination**
    - The project team will continue working closely with local stakeholders including local municipalities, schools, neighborhoods and other local agencies to ensure safety standards are met and impacts to the public are minimized in any way possible
  - **Emergency vehicles will be provided access at all times**



Lighted Message Board

# Community Outreach

- To receive project specific updates please email [mreading@corradino.com](mailto:mreading@corradino.com) to be added to the distribution list
- A weekly press release will be distributed every Friday
- Additional project specific information can be found on the website

**\*\*All project updates will be posted to the District Four website.\*\***



***Scan this QR code to go to the District Four Website Project Page.***

*www.d4fdot.com*



# Meet the Team – Live Q&A



**Jessica Lewis**  
Construction Project Manager  
FDOT District Four  
Palm Beach Operations



**Josh Torrens**  
Contractor  
Ranger Construction



**Hernando Garces, P.E.**  
Construction Project Administrator  
Creative Engineering Group



**Damaris Williams, P.E.**  
Design Project Manager  
FDOT District Four, Design



**Kevin Micocci, P.E.**  
Senior Project Engineer  
Creative Engineering Group



**Cyndy Kendrick, P.E.**  
Engineer of Record  
Stanley Consultants, Inc.

# Contact Us

Throughout the project, questions or comments can be submitted via email or phone.

**Melissa Reading**  
Community Outreach Specialist



[mreading@corradino.com](mailto:mreading@corradino.com)



(772) 577-8803

**Hernando Garces, P.E.**  
Construction Project Administrator



[hgarces@cegroupfl.com](mailto:hgarces@cegroupfl.com)



(954) 243-7731

**Jessica Lewis**  
Construction Project Manager



[jessica.lewis@dot.state.fl.us](mailto:jessica.lewis@dot.state.fl.us)



(561) 459-0908

*This PowerPoint presentation has been  
uploaded to GoToWebinar for  
download.*

# FDOT Safety Message



U.S. Department of Transportation  
Federal Highway Administration



## Safety Benefits:

High-visibility crosswalks  
can reduce pedestrian injury  
crashes up to:

**40%**

Intersection lighting can  
reduce pedestrian crashes  
up to:

**42%**

Advance yield or stop  
markings and signs can  
reduce pedestrian  
crashes up to:

**25%**

## Know the Basics – Pedestrian Safety

### 8 Safety Tips for Drivers

1. Look out for pedestrians everywhere, at all times
2. Use extra caution when driving in hard-to-see conditions, such as nighttime or bad weather.
3. Slow down and be prepared to stop when turning or otherwise entering a crosswalk.
4. Yield to pedestrians in crosswalks and stop well back from the crosswalk to give other vehicles an opportunity to see the crossing pedestrians so they can stop too.
5. Never pass vehicles stopped at a crosswalk. There may be people crossing where you can't see.
6. Never drive under the influence of alcohol and/or drugs.
7. Follow the speed limit, especially around people on the street, in school zones, and in neighborhoods where children are present.
8. Be extra cautious when backing up and look for pedestrians.



**Thank you for attending today's  
Virtual Public Meeting!**